



Meikhtila Lake Integrated Development Plan (MLIDP)

World Water Day, MYANMAR

U Kyaw Lin Htet
13 March 2017
Open



Meikhtila Lake Integrated Development Plan (MLIDP)



Myanmar & The Netherlands - IWRM Co-operation

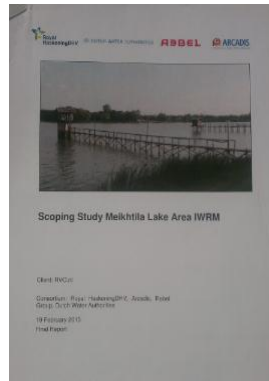


Content Presentation

- ❖ *Introduction*
- ❖ *Context project*
- ❖ *Location & situation Meikhtila Lake*
- ❖ *Project outline*
 - 3 Try-out-projects
 - Methodology
 - Main Results
 - Lesson Learned
 - Development MLIDP-plan
 - Main Results
 - Capacity Building
 - Next Steps
- ❖ *Q&A*



Context project



- 2013: NL and MM (NWRC) signed MoU Water
- 2014: Strategic Study IWRM Myanmar, NWRC

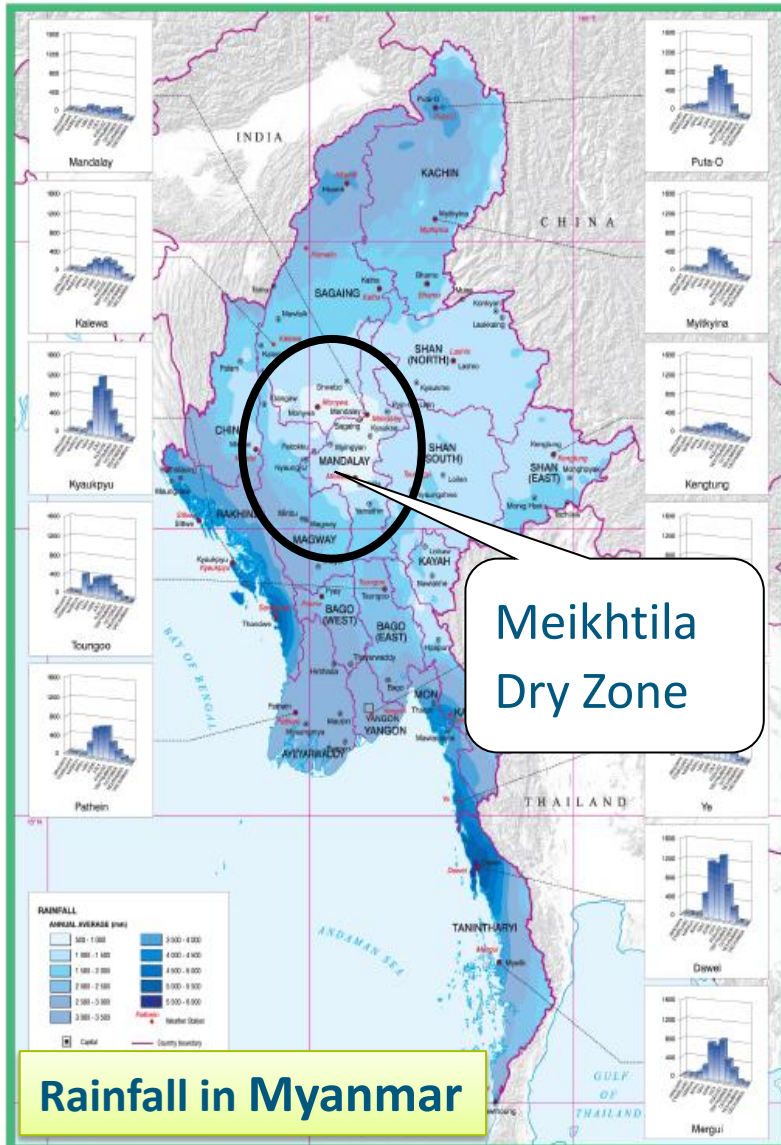
Key guidelines:

- Optimize what you have
- Take a broader view
- Learning by doing & Capacity building

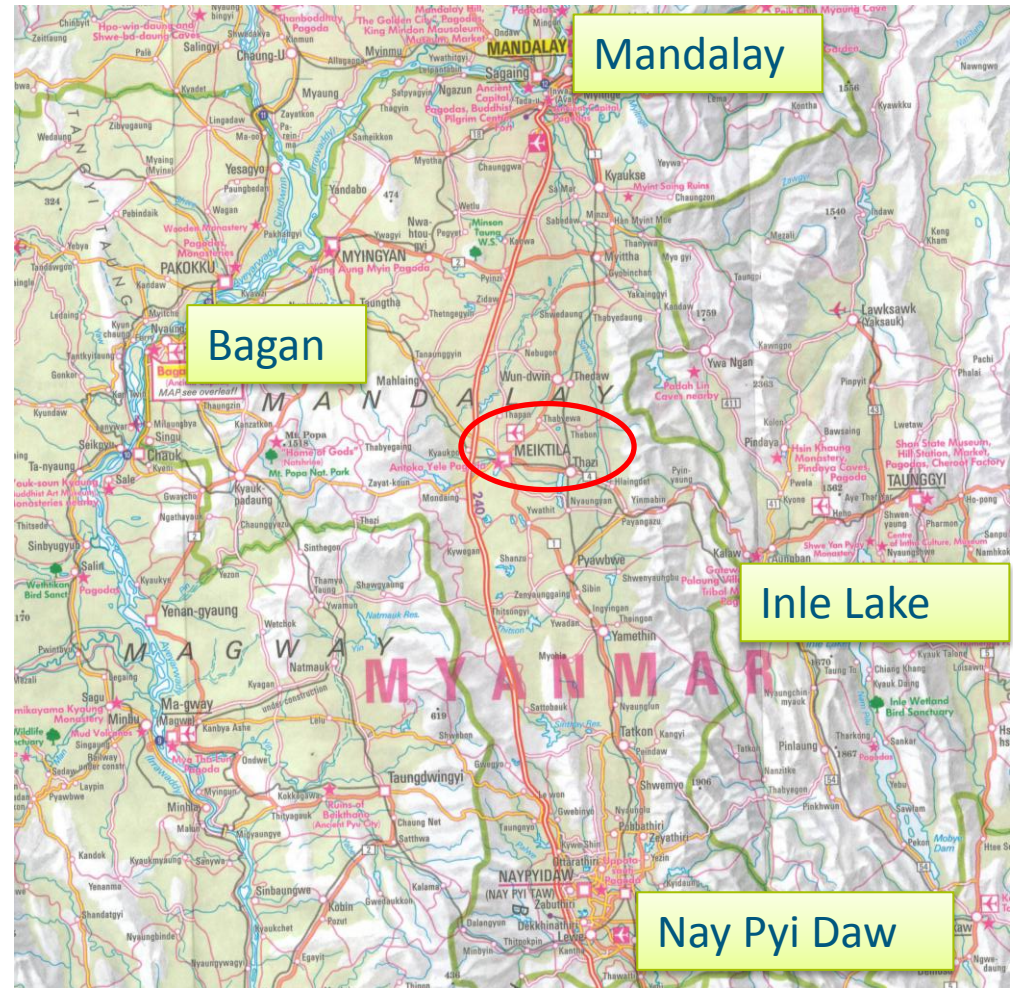


- Feb 2015: Scoping Report Meikhtila Lake
- Jan 2016: Scope Report MLIDP: agreement NL-MM
- Jan 2016: Tender bdocument (NL)
- Feb 2016: Project Proposal (NL)
- 29 April 2016: Contract (NL): start 1 May
- Planning May 2017: MLIDP ready

Meikhtila in Central Dry Zone

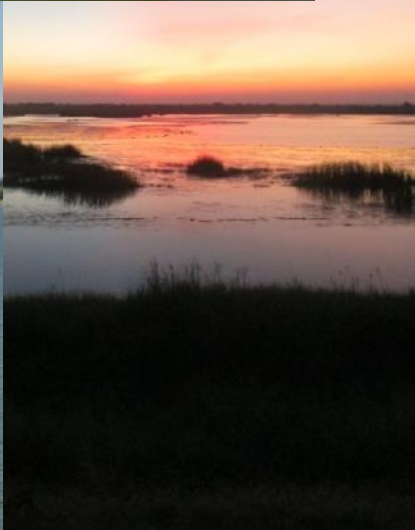


Rainfall in Myanmar



500-1000 mm rain (6 mnths)

Impression



Impression



Project outline = 2 parts

- Implementation 3 try-out-projects:
 - I. Upstream watershed erosion control
 - II. Solid waste management lake border
 - III. Improvement irrigation & crop diversification

- Prepare Meikhtila Lake Integrated Development Plan
 - Analysis
 - Draft-plan
 - MLIDP

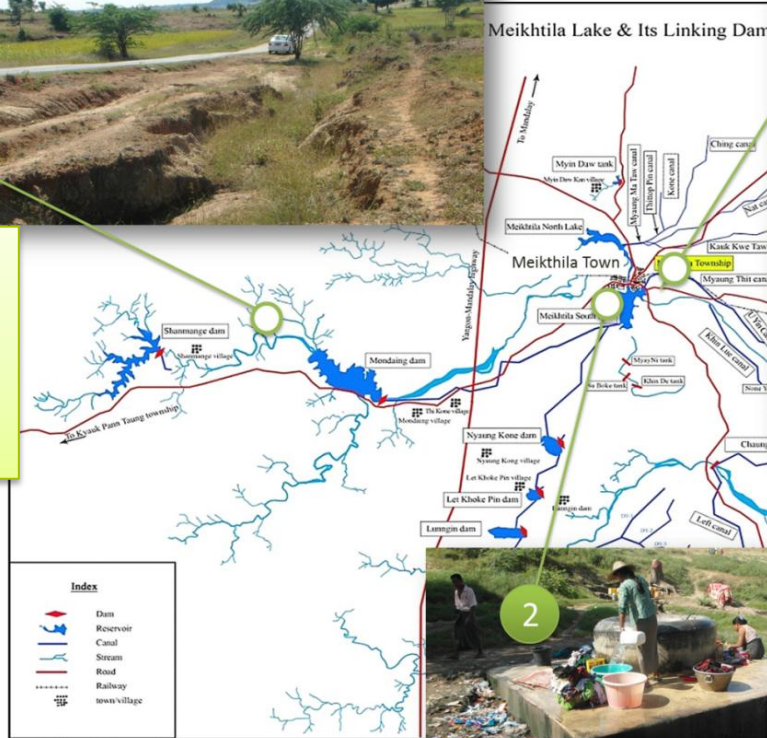
Try-out projects: topics



1

I. Upstream watershed
Erosion silting up
the lakes

Meikhtila Lake & Its Linking Dam



3

III.

Improve Irrigation &
Crop Diversification
“Less drop per crop”



2

II.

Solid Waste polluting the lake

Try-out projects: methodology



Try-out projects: Main results

Try-out (1)-Small Scale Integrated Watershed Management

- 145 acre reforested, cooperation with local farmers



Try-out (2)- Solid Waste Management

- Better truck coverage in urban area, better awareness, drains cleaned
- Village committee formed at rural level and awareness increased



Try-out (3)- Crop Diversification

- Seed production initiative started, farmers trained & improved infrastructure



Try-out projects: Lessons learned

Try-out 1: Small Scale Watershed Management

- ✓ Check dams are effective in the try-out area
- ✓ Cooperation between departments leads to better results
- Hedges may be successful when they are constructed with fodder crops
- Farmer awareness needs to be improved
- Take a step by step (village by village) approach to increase ground cover

Try-out 2: Solid Waste Management

- ✓ Removal of existing waste collection points has reduced the amount of rubbish in the streets
- ✓ Influence of important person helps to mobilize CSO/NGO for awareness raising
- Increase the awareness about the opportunities for recycling waste
- For the long term: use waste to energy methods

Lessons learned (Lu Kin Ji)

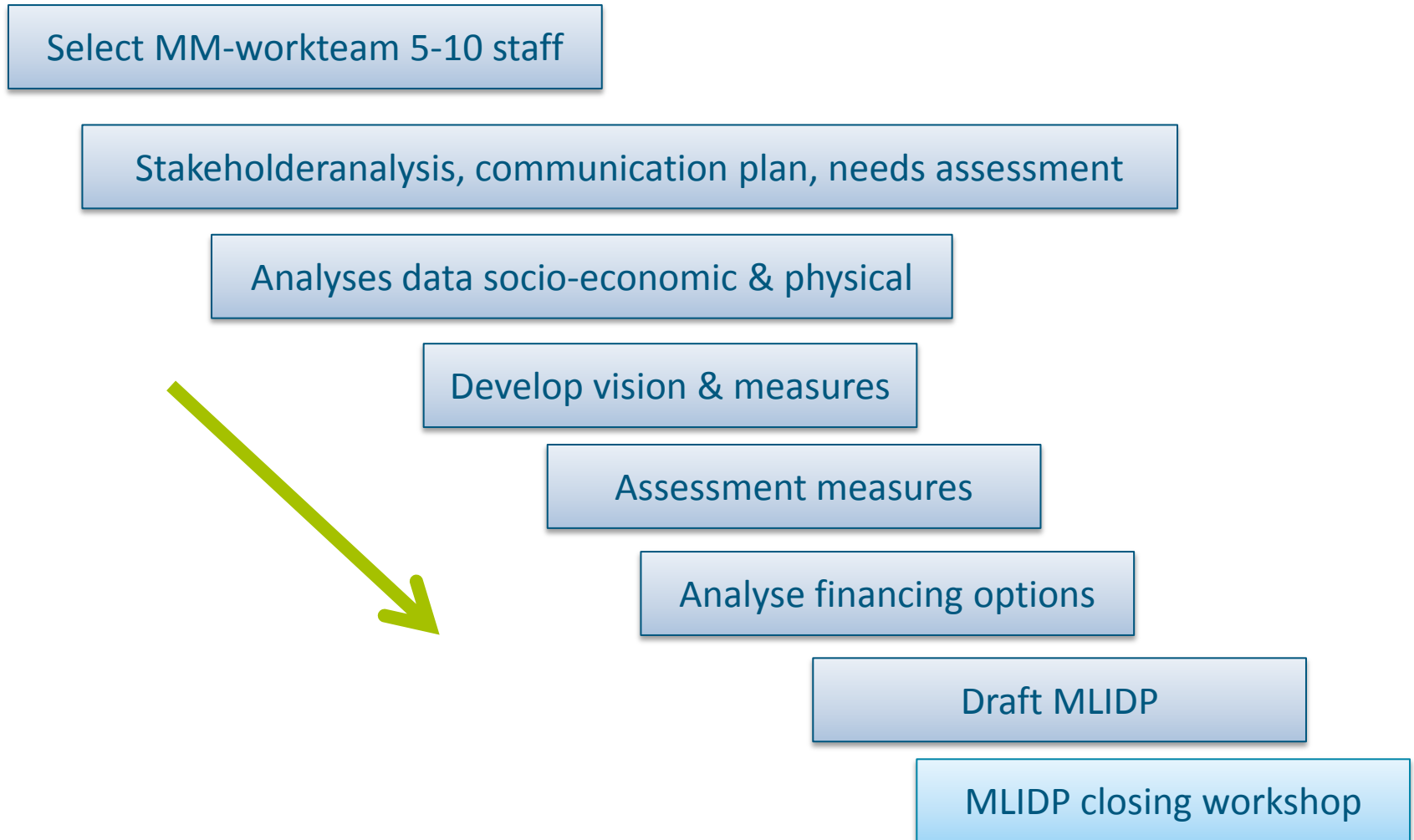
- ✓ When the village decides not to use a waste point anymore this is reasonably well observed by its residents
- Find a short term (or temporary) solution to the waste problem in Lu Kin Ji Village to prevent waste dump in the surrounding areas.

Try-out 3: Improve Irrigation & Crop Diversification

- ✓ DoA sends information about crop prices to the farmers on a monthly basis
- ✓ Farmers followed the suggestion for good agricultural practices with good guidance from DoA
- Farmers do not have financial means to invest in their farms
- Cooperation between DoA and ID and farmers is challenging with regards to water releases, conflicts exist about water availability
- **= Recommendation**
- ✓ **= Success Factor**



MLIDP: Methodology



MLIDP: Process



MLIDP: Main results

- Vision: “All inhabitants of the watershed have access to a sustainable source of water for a healthy and prosperous livelihood in a safe and green environment”
- Issues identified for 6 main topics:
 - Water availability
 - Flooding
 - Erosion and sedimentation
 - Pollution and solid waste
 - Institutional cooperation
 - Awareness
- 19 measures identified and described to deal with these issues and achieve vision

MLIDP: Capacity Building

- Water balance modelling (RIBASIM)
- Climate smart agriculture
- Awareness raising techniques
- Throughout project: 'learning by doing'



MLIDP: Next steps

- Ensure institutional embedding of MLIDP
- Identify financing opportunities for measures included in MLIDP

Thank You All!

Questions??



Info: KyawLin.Htet@rhdhv.com



[linkedin.com/company/royal-haskoningdhv](https://www.linkedin.com/company/royal-haskoningdhv)



[@RHDHV](https://twitter.com/RHDHV)



[facebook.com/RoyalHaskoningDHV](https://www.facebook.com/RoyalHaskoningDHV)